

PROGRAMME UPDATE MEETING #1

BIM2

18 SEPTEMBER 2024



**RENNES
SCHOOL
OF BUSINESS**

UNFRAMED THINKING



BACHELOR IN MANAGEMENT BIM 2

- > You and your programme
- > One question, one place: Aloha Square
- > Engaging - the opportunities



NOEMIE DESPREZ
BACHELOR PROGRAMME
DIRECTOR

YOU AND YOUR PROGRAMME

WELCOME BIM2 COHORT

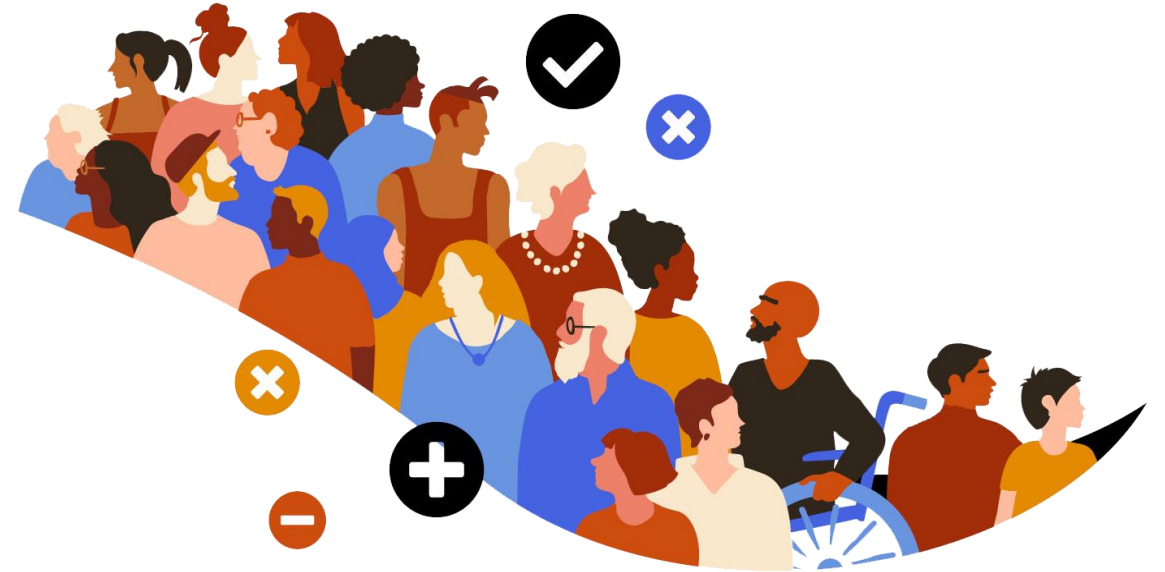
266 Students

177 Classic TRACK students

89 English TRACK students

36 international students = 14 % of your cohort

20 different nationalities



THE BACHELOR PROGRAMME MISSION

To ensure that graduates acquire all assets and tools to commit oneself into practical managerial actions and create a positive impact on the economy, human beings and our planet.

SKILLS YOU ARE EXPECTED TO DEVELOP THROUGHOUT BACHELOR RENNES SB DEGREE

Combine professional expertise with resilience, critical thinking & personal influence to **Change** mindsets

Leverage the economic, ecological, social performance of the firm and its operations to **Change** Business models

Apply scientific research skills to **Create** original contributions for the business community

Integrate disciplines and deep knowledge to **Create** innovative solutions

Identify key career drivers to **Create** Yourself and others through meaningful lifelong learning

Demonstrate advanced technological literacy to **Connect** physical and digital spaces

Develop a sustainable strategic vision to **Connect** (eco-)systems

Build and cultivate relationships to **Connect** people in multicultural contexts

BIM2 YEAR OF DECISIONS: CHOOSE YOUR PATHWAY

For every BiM2 student: **MAKE YOUR DECISIONS FOR BIM3**

WHICH PATHWAY?

CLASSIC PROGRAMME
with studies abroad
(Formation Initiale)
or
APPRENTICESHIP with
studies in Rennes
(Alternance)



IF CLASSIC PROGRAMME

=> WHICH SPECIALIZATION?

Marketing
or
Finance
or
Supply Chain

PRESENTATION OF THE SELECTION PROCESS (WEBRISE) on the **PUM MEETING ON 11 OCTOBER**
PRESENTATION OF SPECIALITIES at the **PUM MEETING ON 22 NOVEMBER TBC**

BIM2 STUDENTS AND CHOICE CLASSIC PROGRAMME

Only for BiM2 students who entered in BiM1

CHOOSE 10 PARTNER UNIVERSITIES

Information

- on Aloha page [BiM - Step 1 - Gather the necessary documents for university selection - Aloha Student Support \(rennes-sb.com\)](#)
- in Student Handbook Chapter Studying Abroad



Meet Thibaut from the mobility TEAM to answer any questions about Mobility in BiM3 @ Aloha Square on **FRIDAY 20 SEPTEMBER** from 11.45 a.m. to 12.30 p.m.

TAKE YOUR ENGLISH TEST TOEFEL, TOEIC, ...

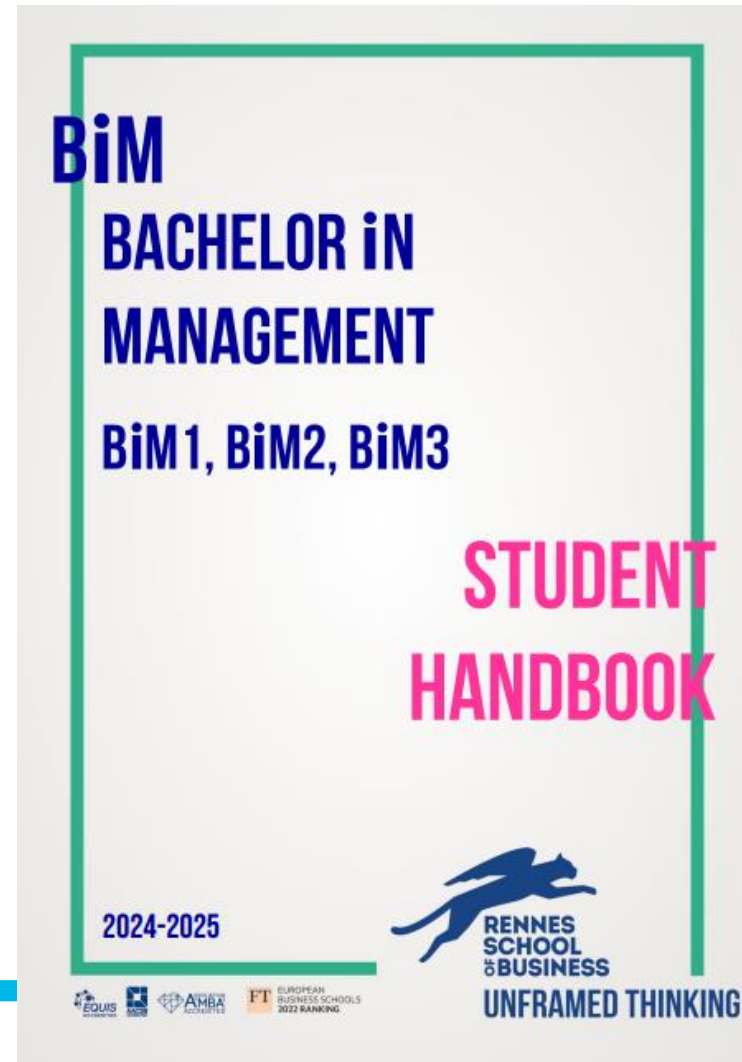
Information

on Aloha page [External Language Tests for English What purpose? – Aloha Student Support \(rennes-sb.com\)](#)



Deadline for taking english test and University Abroad selection is **BEFORE DECEMBER 31st** for TOEFL mid-December

LIVRET PÉDAGOGIQUE / STUDENT HANDBOOK 24-25



AVAILABLE ON
YOUR WEBRISE
soon !

On-time arrival

**BE
INTERESTED**

1

Active learning process

**BE
ATTENTIVE AND
ACTIVE**

2

On-time submission of assessments

**BE
RESPONSIBLE**

3

5 KEY EXPECTATIONS FROM STUDENTS

TO OPTIMISE THE LEARNING EXPERIENCE

4

Full attendance

BE ENGAGED

5

Respectful communication

BE PROFESSIONAL

LITTLE REMINDER

	2024-09-02 - 08:00 - 09:00 ---								
09	2024-09-02 - 09:00 - 11:00 --- ONBOARDING MEETING -- Auditorium_B1 -	2024- 09-03 - 09:00 - 13:00 ---							
10									
11	2024- 09-02 - 11:00 -								
12		The conne ction &							
13			2024- 09-03 - 12:30 -	2024- 09-04 - 12:30 -	2024- 09-05 - 12:30 -			2024-09-06 - 12:30 - 16:00 --- FACULTATIF / ART & CULTURE POLE -- Entrepreneurs' street A - BUILDING_1 - PLANIF_EVENTS	
14	2024- 09-02 - 14:00 -	2024- 09-03 - 14:00 -	2024- 09-03 - 16:00 ---	2024- 09-04 - 16:00 ---	2024- 09-04 - 13:50 -	2024- 09-05 - 16:00 ---			
15	FACU LTATI	FACU LTATI	FACU LTATI	FACU LTATI	FACU LTATI				
16	17:00 ---	17:00 ---			14:50 ---		2024- 09-05		
17	The	The			Progr amme Updat e Meeti ng -- Audit orium				
18						2024-09-05 - 17:00 - 18:30 --- PGE2 PRESENT TUE			
19									

OFFICIAL SCHEDULE = RISE

SCHOOL RULES / RÈGLES DE SCOLARITÉ

Attendance Policy

Règles d'assiduité

Resit : Grade capped at E

Rattrapages :
La note de rattrapage est plafonnée au grade « E ».

For more information, refer to

pour plus d'informations, consultez

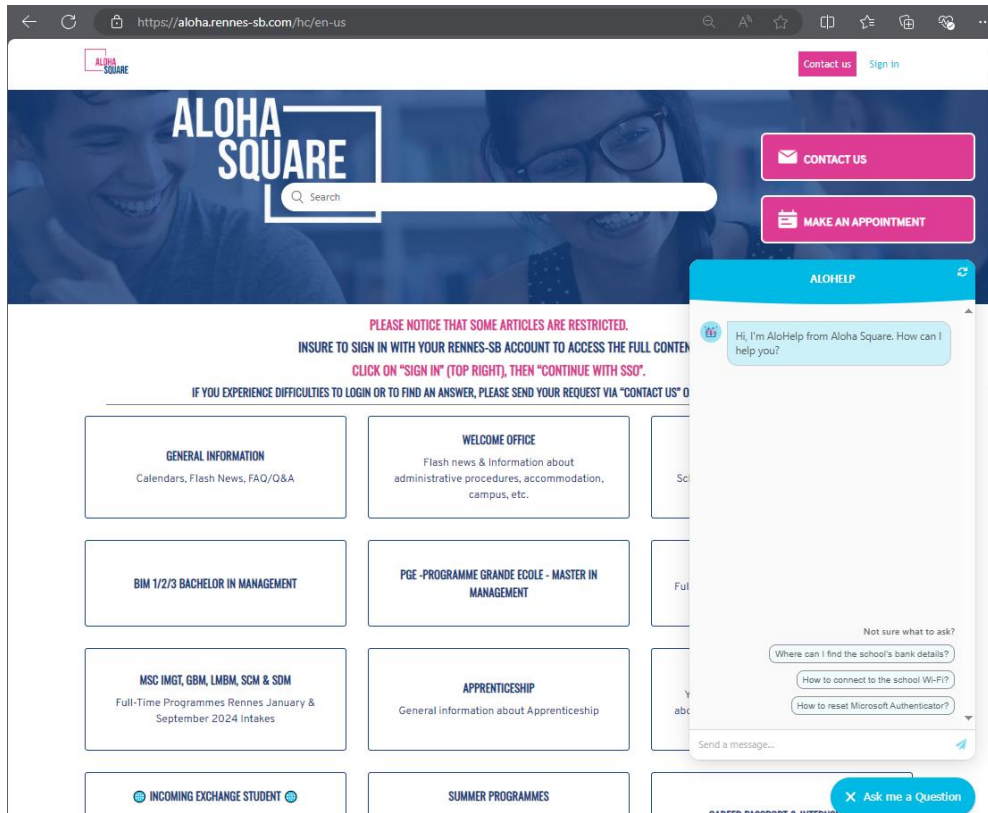


RENNES
SCHOOL
& BUSINESS
UNFRAMED THINKING

ONE QUESTION, ONE PLACE : ALOHA

ALOHA SQUARE

REMINDER



Or meet the Aloha Team !

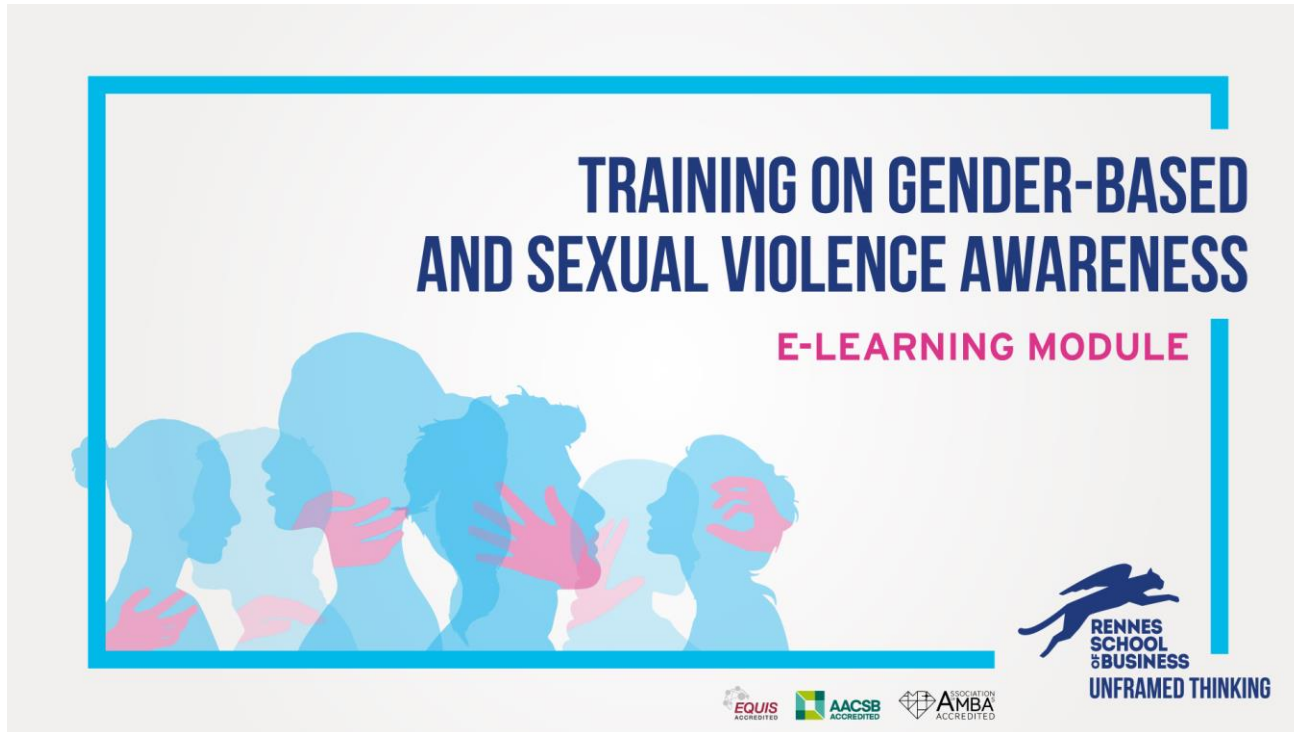


Building 1 - First Floor

Visit Aloha Website - aloha.rennes-sb.com

ETHICS

Complete the E-learning module on sexual and gender-based violence



for all students
who did not
take the
module last
year

Our goal : To create a safe and respectful environment for everyone

When ? Keep an eye on your inbox—you'll receive an email in the coming weeks !

THE ALOHA IT TEAM

WELCOME TO

ALOHA
SQUARE

REMINDER



Click here to



CONTACT US



Ludovic

FOR YOUR
IT QUESTIONS

THE ALOHA IT TEAM

IS AVAILABLE



Monday to Thursday
from 8 am to 6 pm
and Friday from 8 am to 5 pm

and by email
via the [Contact us](#) button
on the Aloha website

And also:
Victorien,
Romain,
Cem



**ENGAGING:
THE
OPPORTUNITIES**

STUDENT REP

PLAY AN ACTIVE ROLE AS A STUDENT REP FOR BIM



MISSION

- playing an active and participatory role to improve the learning experience of students at school,
- be part of the student reps community all programs combined,
- participate in meetings, workshops, events

ELECTION

- 2 student rep's are elected in class by their fellow classmates
- Before September 30th, 2024

Click here to [Find out more](#) on website ALOHA

APPLY TO BECOME A STUDENT REPRESENTATIVE

DEADLINE
WEDNESDAY
25 SEPTEMBER

Student Reps 2024-25 Campaign
BIM candidates give us your
name!



SHINE AS AN AMBASSADOR



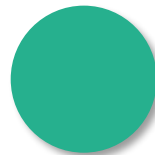
MARIE CHEVRON

forums@rennes-sb.com



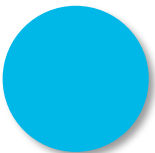
LOUISE BEZEAUX

promotion-france@rennes-sb.com



STUDENT FAIRS

Examples :
L'Etudiant, Studyrama



TESTIMONIES

Example :
School presentation in
your former school



INTERNAL EVENTS

Examples :
Open days
Discovery Camps

LEARNING BY DOING TEAM

For more information, contact

Vous avez des questions, contactez-nous



GWENAELLE DELAHAIE

RESPONSABLE DU PÔLE ASSOCIATIF

MAIL : GWENAELLE.DELAHAIE@RENNES-SB.COM

OFFICE : RUE INTÉRIEURE



THOMAS LEBON

COORDINATEUR DU PÔLE ASSOCIATIF

EN ALTERNANCE

THOMAS.LEBON@RENNES-SB.COM

WHO CAN JOIN THE ASSOCIATIONS/CLUBS?

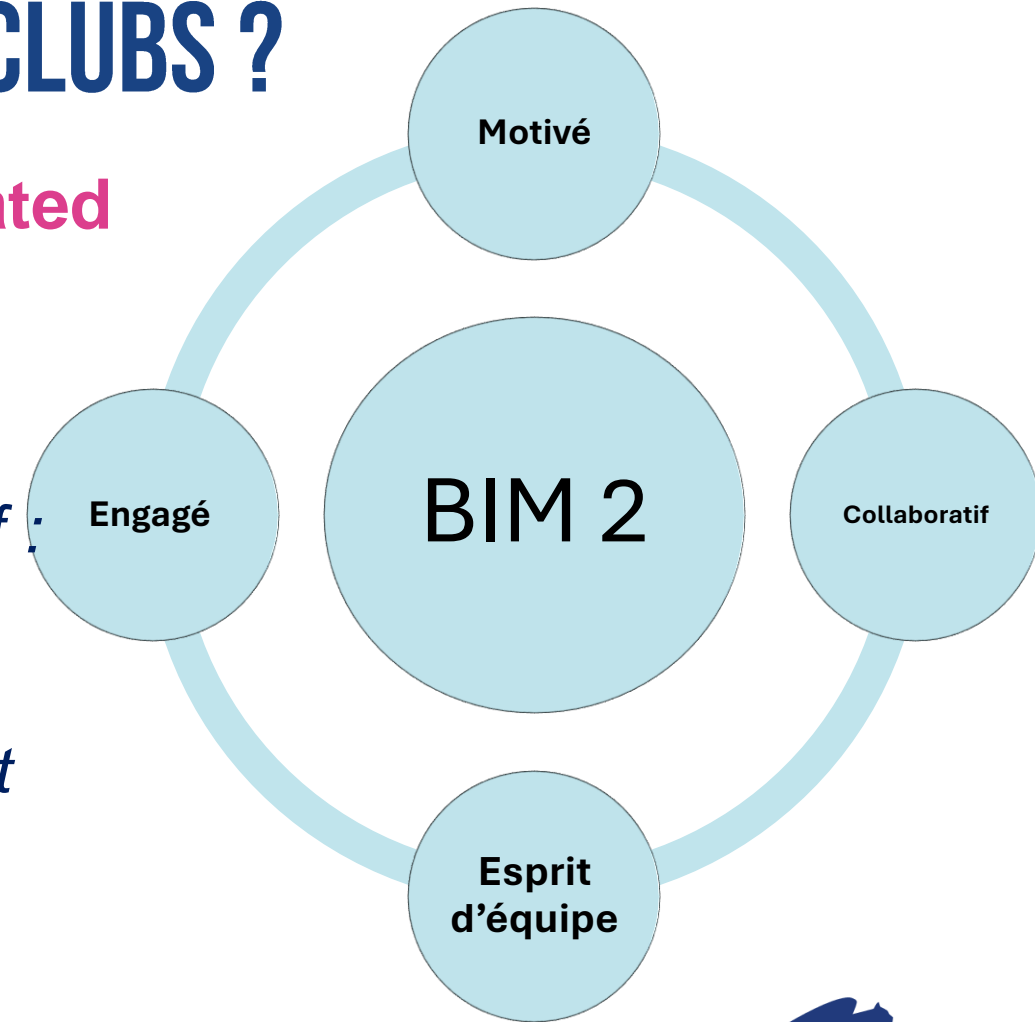
QUI PEUT REJOINDRE LES ASSO/CLUBS ?

Voluntary work, no ECTS credits allocated
Bénévolat, aucun crédit ECTS alloué

35 open positions as an active member :

35 postes ouverts en tant que membre actif :

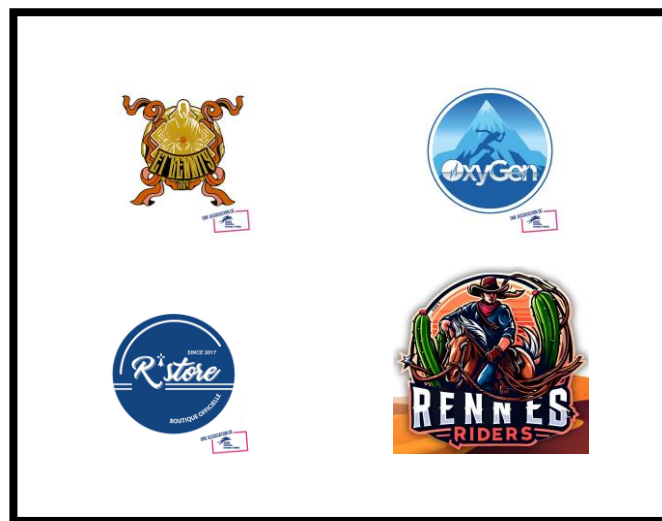
- Communication
- Logistics / *Logistique*
- Business development / *Développement commercial*
- Events / *Evènementiel*
- ...



Art et culture

QUELLES ASSOS / CLUBS ?

Humanitaire
et social



Vie
étudiante

Business

Sport

SAVES THE DATES

JOIN YOUR ASSOCIATION/CLUB BY 9 OCTOBER AT THE LATEST
INTÉGRATION DANS VOTRE ASSOCIATION/CLUB LE 9 OCTOBRE AU PLUS TARD

Lun 16/9

Mar. 17/9

Mer. 18/9

Jeu. 19/9

Ven. 20/9

Sam. 21/9

Dim. 22/9

Lun. 23/9

Mar. 24/9

BIM2 selection interview (active member) from 16/09 to 3/10
Entretien de sélection des BIM2 (membre actif) du 16/09 au 3/10

Mer. 25/9

Jeu. 26/9

Ven. 27/9

Sam. 28/9

Dim. 29/9

Lun. 30/9

Mar. 1/10

Mer. 2/10

Jeu. 3/10

BIM2 selection interview (active member) from 21/09 to 1/10
Entretien de sélection des BIM2 (membre actif) du 21/09 au 1/10

**Final results for the
community centre**
***Résultat définitif
au pôle associatif***

WELCOME TO YOUR NETWORK

WHAT IS AN **ALUMNI** NETWORK?

- Non-profit association founded in 1993 & School Department
- 28 000+ members (students & graduates) in France and abroad



ONCE A STUDENT, ALWAYS AN ALUMNI

ALUMNI COMMUNITY

- Students from DAY 1 in Rennes School of Business
- Graduates for ever



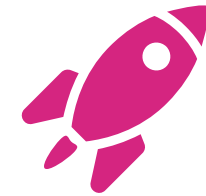
AIMS & VALUES



1 Promote exchanges between Alumni and supportive relations between its members



2 Defend interests attached to the diplomas awarded by the School



3 Act as an accelerator of professional opportunities

WORLDWIDE NETWORK



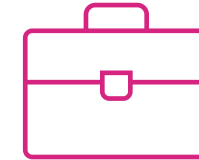
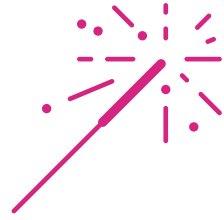
ALL JOBS, ALL SECTORS, ALL OVER THE WORLD

WE SHOW THE WAY AND HELP ON THE JOURNEY



- Clarify and give relevant images
- Create conditions for cooperation that benefits us all
- Share best practices and create common understanding

MISSIONS & SERVICES



DATA

- Online directory
- Statistics and reports

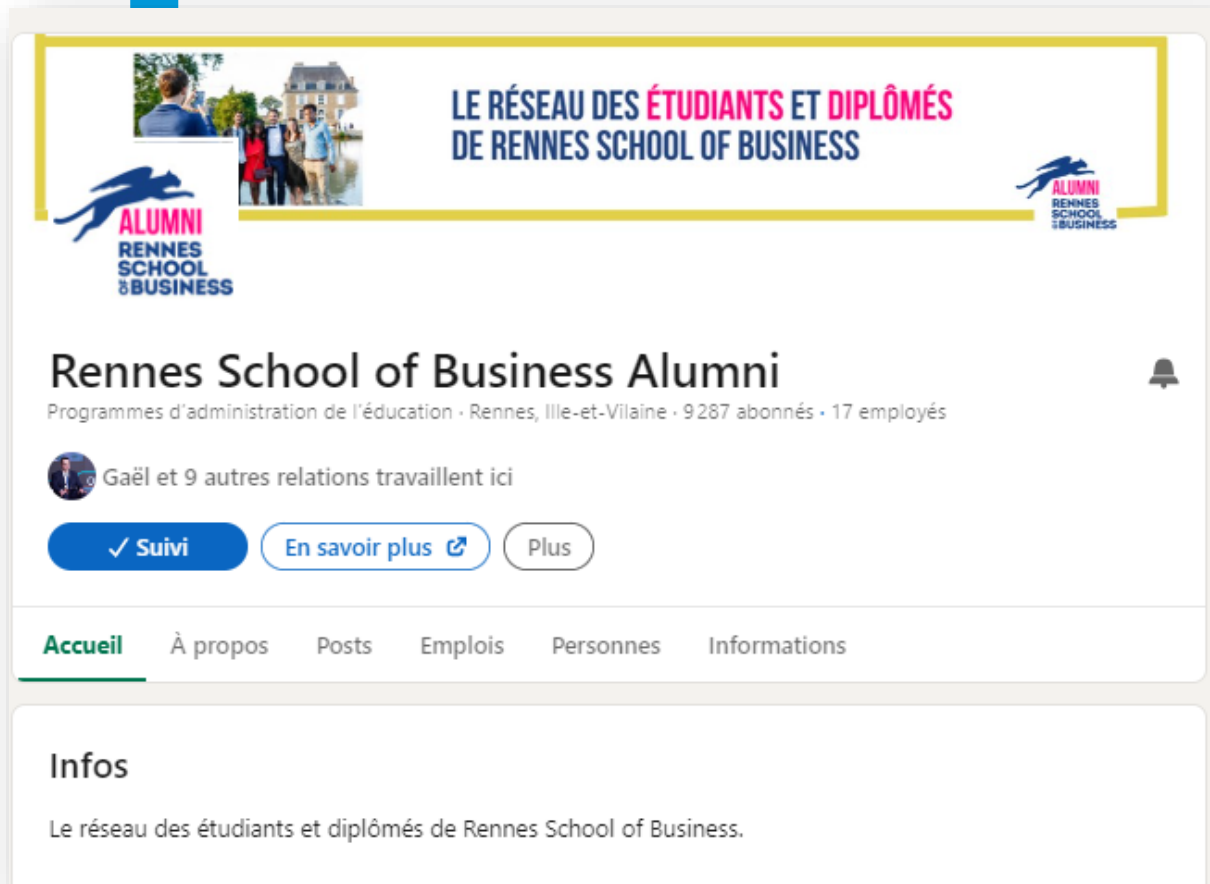
EXPERIENCES

- +150 events
- +17,000 social community
- +300 volunteers
- Portraits & souvenirs

CAREER

- Maximise your employability
- Career Starter / Booster

KEEP IN TOUCH



- Stay up to date with our latest news
- Join our LinkedIn Page



#BienPlusQu1Reseau

YOUR CONTACTS



Margaux GESLIN

margaux.geslin@rennes-sb.com

Communication
Social media
Events



Maya GRASSI

maya.grassi@rennes-sb.com

Career Development
Job opportunities



Violaine POGEANT

violaine.pogeant@rennes-sb.com

Communication
Events
Data

BECOME A PIONEER WITH INNOSTART



VALENTIN HENRY

- ❑ P22 PGE , ex entrepreneur
- ❑ 3 companies created
- ❑ 300+ entrepreneurs met



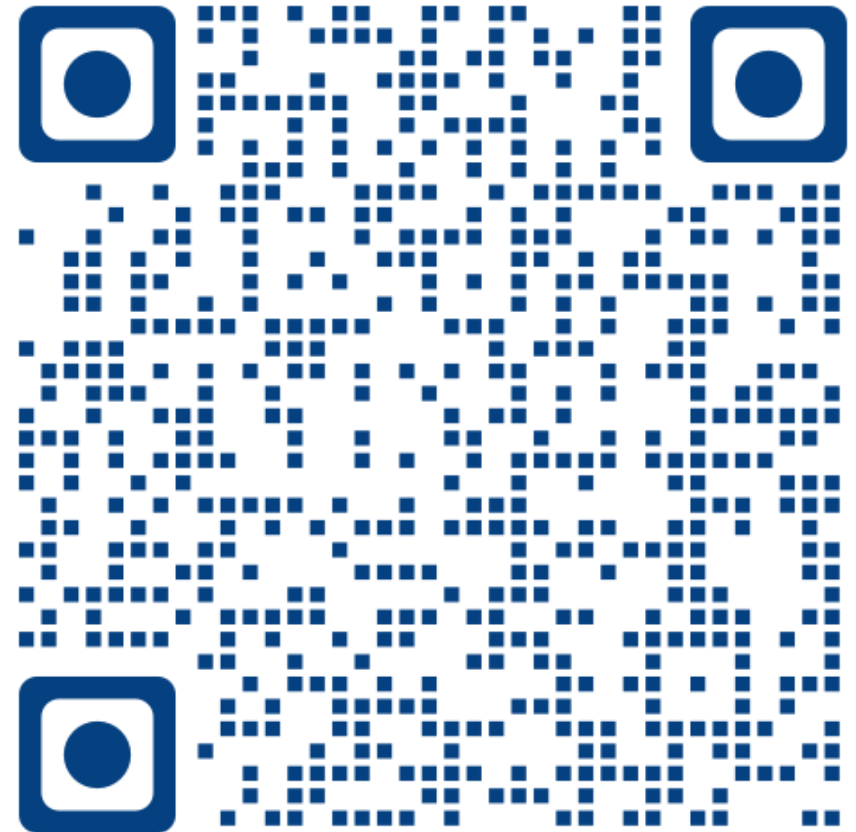
WHAT'S INNOSTART ?

- ❑ 164 entrepreneurs in 2023-2024, 20 companies created
- ❑ Coworking Space in B2 & B4
- ❑ 30 events

INNOSTART



PUM'AWARDS



LET'S START YOUR BUSINESS



**RENNES
SCHOOL
OF BUSINESS**

UNFRAMED THINKING

ENGAGE FOR YOUR COMMUNITY IN RENNES

COME AND CHEER FOR YOUR SCHOOL DURING THE MARATHON VERT



LE MARATHON
VERT® RENNES SCHOOL
OF BUSINESS

RSB title partner for the 2nd year
running

*RSB partenaire titre pour la 2^e
année consécutive*

26 and 27 October 2024

RUNNING / LES COURSES

6 runs courses

Saturday evening 26 *Le samedi 26 au soir*

- 5 km family walk *Marche familiale de 5 km*
- 5 km women's run *Course féminine de 5 km*
- 10km run *Course 10km*

Sunday mornings *Le dimanche matin*

- Marathon 4 runners: 7 to 11 km each
Marathon 4 coureurs : 7 à 11 km chacun
- Marathon 2 coureurs : 21 km chacun
Marathon 2 runners: 21 km each
- Marathon solo : 42,195 Km

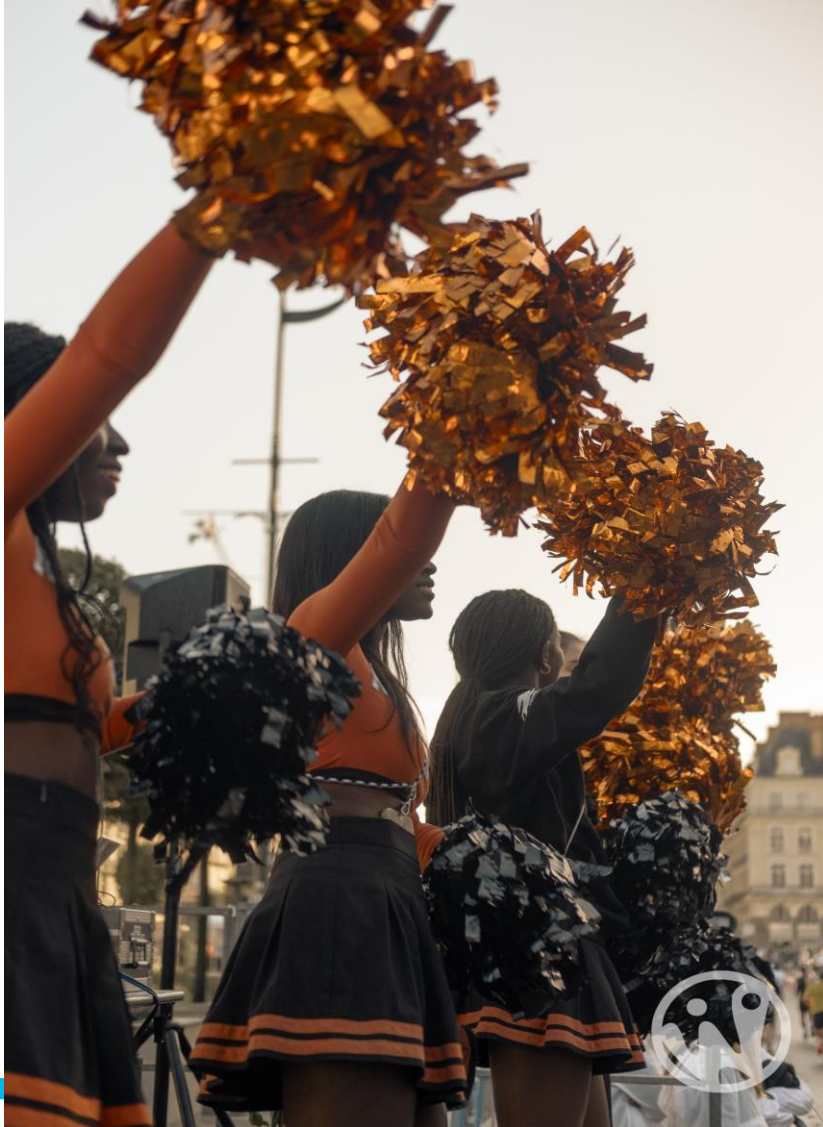


CONNECT RUN



- 1st edition exclusively in Rennes SB
*1^{ère} édition en
exclusivité à Rennes SB*
- Student/professional team
*Équipe étudiant.s /
professionnel*
- Groups based on running level and
professional sector
*Groupes basés sur le
niveau de course et le
secteur professionnel*
- The best way to network while doing
sport
*Meilleur moyen de créer son
réseau tout en faisant du sport*

WHAT WE'RE LOOKING FOR / CE QU'ON RECHERCHE



80 volunteers throughout the weekend
*80 bénévoles sur tout
le week-end*

50 runners
50 coureurs

Supporters!
Des supporters !

Contacts :
margaux.le-bail@rennes-sb.com
thomas.lebon@rennes-sb.com



LE MARATHON
VERT RENNES SCHOOL
OF BUSINESS

NEXT

PROGRAMME UPDATE MEETING

11/10/2024



**RENNES
SCHOOL
OF BUSINESS**

UNFRAMED THINKING

ANY QUESTION ?

**Visit Aloha Website -
aloha.rennes-sb.com**

THANK YOU FOR YOUR ATTENTION



**RENNES
SCHOOL
OF BUSINESS
UNFRAMED THINKING**

KEY DATES FALL SEMESTER

SEPTEMBER

18/09 – BIM PUM#1

18/09 – ALOHA FAIR

13 to 30/09 - Student Reps' election

OCTOBER

03/10 and 04/10 - Career Days#1

11/10 - BIM PUM#2: Selection Process for BIM3

14/10 - Student Reps' Workshop

28/10 to 02/11 - Holidays

NOVEMBER

13/11 - International Fair

22/11 - BIM PUM#3: specialisations,
studies abroad (To Be Confirmed)

DECEMBER

02/12 to 14/12 - FINAL EXAMS AT SCHOOL

16/12 to 04/01 – XMAS HOLIDAYS