

PROGRAMME UPDATE MEETING #1

BIM1 RENNES
13 SEPTEMBER 2024



**RENNES
SCHOOL
of BUSINESS**
UNFRAMED THINKING



BACHELOR IN MANAGEMENT BIM 1

- > You and your programme
- > One question, one place: Aloha Square
- > Engaging - the opportunities



NOEMIE DESPREZ
BACHELOR PROGRAMME
DIRECTOR

YOU AND YOUR PROGRAMME

WELCOME BIM1 COHORT

260 Students:

239 in Rennes and

21 in Paris

70 international
students = **27 %** of your cohort

34 different
nationalities



THE BACHELOR PROGRAMME MISSION

To ensure that graduates acquire all assets and tools to commit oneself into practical managerial actions and create a positive impact on the economy, human beings and our planet.

SKILLS YOU ARE EXPECTED TO DEVELOP THROUGHOUT BACHELOR RENNES SB DEGREE

Combine professional expertise with resilience, critical thinking & personal influence to **Change** mindsets

Leverage the economic, ecological, social performance of the firm and its operations to **Change** Business models

Apply scientific research skills to **Create** original contributions for the business community

Integrate disciplines and deep knowledge to **Create** innovative solutions

Identify key career drivers to **Create** Yourself and others through meaningful lifelong learning

Demonstrate advanced technological literacy to **Connect** physical and digital spaces

Develop a sustainable strategic vision to **Connect** (eco-)systems

Build and cultivate relationships to **Connect** people in multicultural contexts

On-time arrival

**BE
INTERESTED**

1

Active learning process

**BE
ATTENTIVE AND
ACTIVE**

2

On-time submission of assessments

**BE
RESPONSIBLE**

3

5 KEY EXPECTATIONS FROM STUDENTS

TO OPTIMISE THE LEARNING EXPERIENCE

4

Full attendance

BE ENGAGED

5

Respectful communication

BE PROFESSIONAL

LITTLE REMINDER

	2024-09-02 - 08:00 - 09:00 ---							
09	2024-09-02 - 09:00 - 11:00 --- ONBOARDING MEETING -- Auditorium_B1 -	2024-09-03 - 09:00 - 13:00 --- The connection &						
10								
11	2024-09-02 - 11:00 -							
12								
13		2024-09-02 - 12:30 - 16:00 --- FACULTATI	2024-09-03 - 12:30 - 16:00 --- FACULTATI	2024-09-04 - 12:30 - 16:00 --- FACULTATI	2024-09-05 - 12:30 - 16:00 --- FACULTATI		2024-09-06 - 12:30 - 16:00 --- FACULTATIF / ART & CULTURE POLE -- Entrepreneurs' street A - BUILDING_1 - PLANIF_EVENTS	
14	2024-09-02 - 14:00 - 17:00 --- The	2024-09-03 - 14:00 - 17:00 --- The						
15								
16								
17					2024-09-04 - 13:50 - 14:50 --- Programme Update Meeting -- Auditorium	2024-09-05 - 17:00 - 18:30 --- PGE2 PRESENT TUE		
18								
19								

OFFICIAL SCHEDULE = RISE

SCHOOL RULES / RÈGLES DE SCOLARITÉ

Attendance Policy

Règles d'assiduité

Resit : Grade capped at E

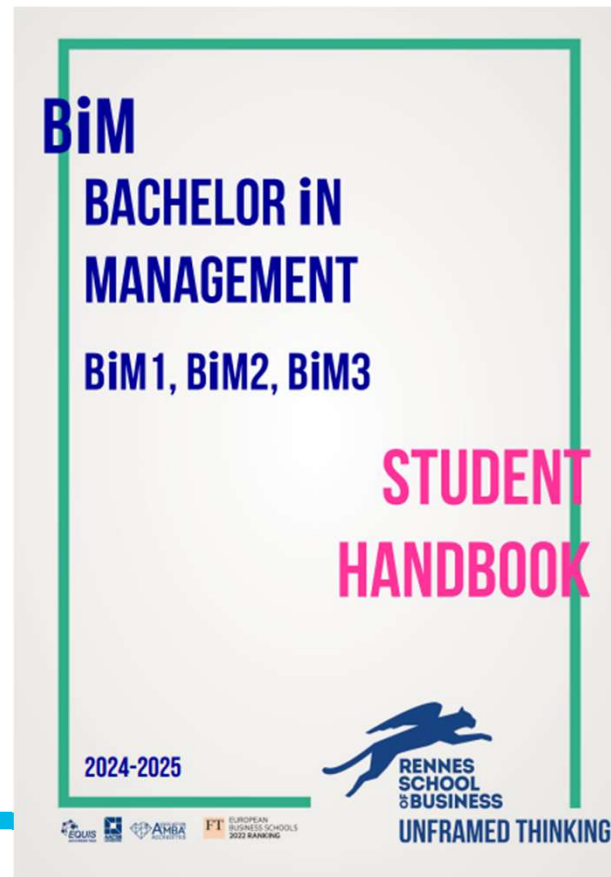
*Rattrapages :
La note de rattrapage est
plafonnée au grade « E ».*

For more information, refer to

pour plus d'informations, consultez



LIVRET PÉDAGOGIQUE / STUDENT HANDBOOK 24-25

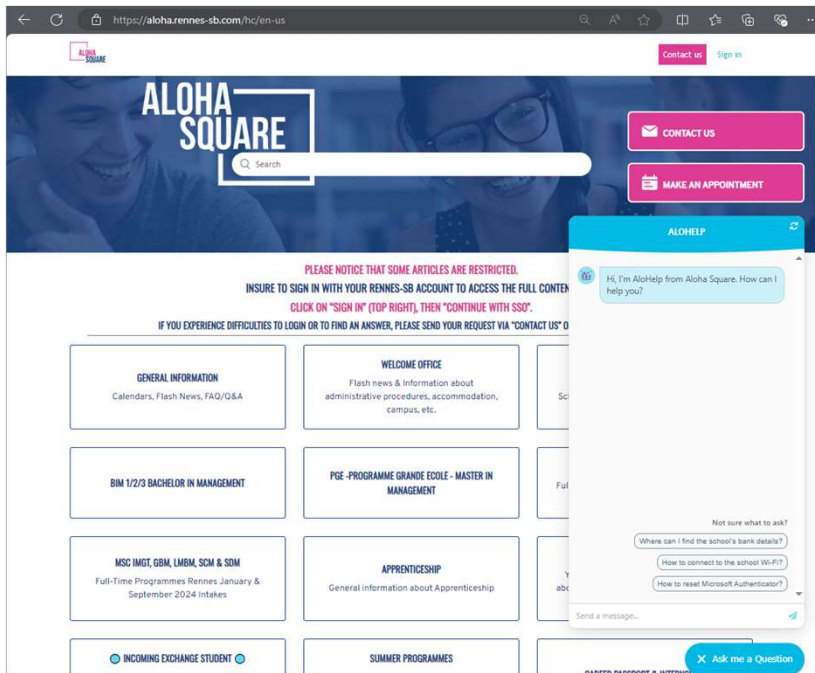


**AVAILABLE SOON
ON YOUR WEBRISE !**



ONE QUESTION, ONE PLACE : ALOHA

ALOHA SQUARE



Visit Aloha Website - aloha.rennes-sb.com

Or meet the Aloha Team !



Building 1 - First Floor

WELCOME OFFICE FOR INTERNATIONAL BUT NOT ONLY

STUDENTS

HOW CAN WE GUIDE YOU ?

- Validating your visa through OFII
- How to open a French bank account
- Housing procedure and how to apply for CAF
- How to register to CPAM (french social security) /Health Insurance
- Guidance in renewing your resident permit
- Navigatong through administrative procedure

Meet Morgane
your Welcome Officer



Building 1 - Office 162

You can easily schedule an appointment via the Aloha Website - [Aloha.rennes-sb.com](https://aloha.rennes-sb.com)



WHAT IS FEEL GOOD ?

A service dedicated to student well-being, striving to create a positive and inclusive environment at school.

Our goal : That each students enjoy their studies and flourish in their daily lives.

3 PILLARS TO SUPPORT YOU :



MENTAL HEALTH & WELL BEING

Whether you're dealing with stress, anxiety, or need someone to talk to, the "WELLNESS CORNER" is dedicated to supporting you.

Meet Stéphanie

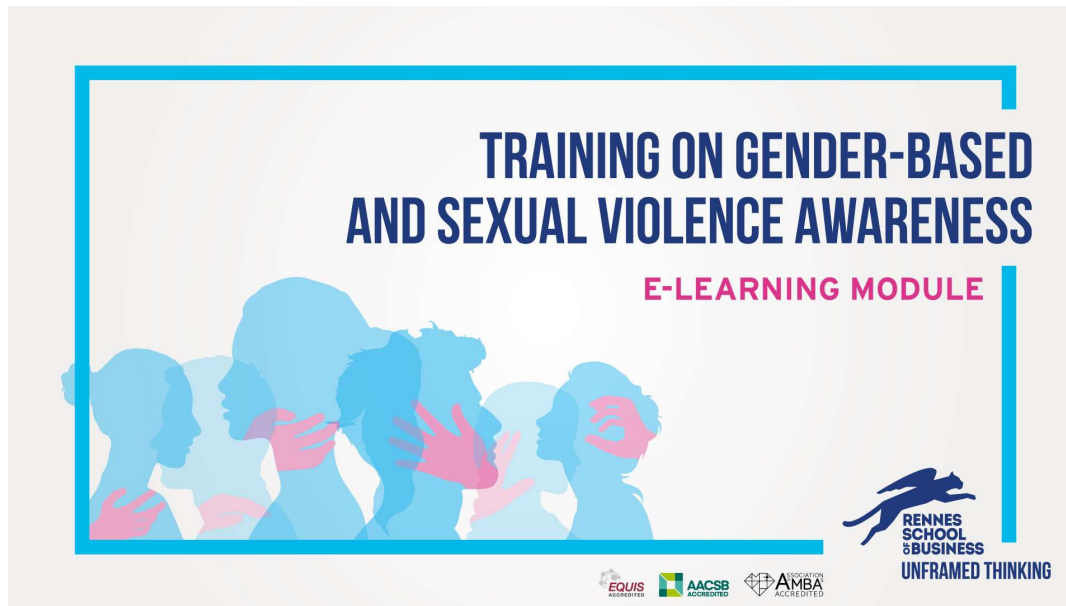


Building 2
Garden Floor - BOX J05
Open on Mondays, Tuesdays
and Thursdays

You can easily schedule an appointment via the Aloha Website - [Aloha.rennes-sb.com](https://aloha.rennes-sb.com)

ETHICS

Complete the E-learning module on sexual and gender-based violence



Our goal : To create a safe and respectful environment for everyone

When ? Keep an eye on your inbox—you'll receive an email in the coming weeks !

THE ALOHA IT TEAM

WELCOME TO

ALOHA
SQUARE



Click here to



CONTACT US

FOR YOUR
IT QUESTIONS



Ludovic

THE ALOHA IT TEAM

IS AVAILABLE

 **Monday to Thursday**
from **8 am** to **6 pm**
and **Friday** from **8 am** to **5 pm**

- and by email
- via the **Contact us** button
- on the Aloha website

And also:
Victorien,
Romain,
Cem

DIGITAL TOOLS

WebRise

>> Your schedule, registration, grades, school certificate, student documents

Microsoft 365

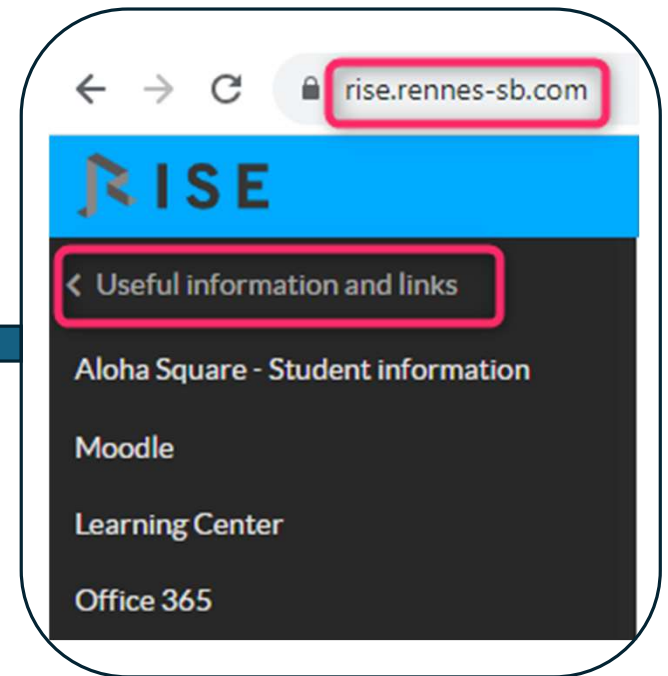
>> Your mailbox, online storage, downloading the Office apps on your computer.

Moodle

>> Access to: your courses, learning materials from your professors, quizzes, assignments

« UNIK »
credentials:

Your
Rennes SB
e-mail
&
password



LINKS TO SAVE



[Aloha Website: aloha.rennes-sb.com](http://aloha.rennes-sb.com)

[Microsoft 365: office.com](http://office.com)

[WebRise: rise.rennes-sb.com](http://rise.rennes-sb.com)

[Moodle: moodle.rennes-sb.com](http://moodle.rennes-sb.com)



[Moodle Introduction Video:](#)

[Click here](#)
[to play:](#)

what is MOODLE ?



how do I ACCESS it ?

ALOHA IT SUPPORT



We are here to help you with:

- Installing the Office apps
- Using the school's Wi-Fi
- Questions about your account, Rise, Moodle, Teams, the printing system
- And much more!

Please read the IT & Digital Tools section on the Aloha website



How to contact us:

- Meet us at Aloha Square, Building 1 (1st floor)
- By phone: +33 2 99 54 66 11 (direct line for "IT Support" ONLY)
- Use the «CONTACT US» button on the Aloha Website > select the « IT » topic

STAY CONNECTED!

Don't have your Wi-Fi credentials yet ?
Scan this QR code and enter your school e-mail address!



Read our Wi-Fi guide!
aloha.rennes-sb.com -> « [IT & Digital Tools](#) »



**ENGAGING:
THE
OPPORTUNITIES**

STUDENT REP

PLAY AN ACTIVE ROLE AS A STUDENT REP FOR BIM



ELECTION

- 2 student rep's are elected in class by their fellow classmates
- Before September 30th, 2024

MISSION

- playing an active and participatory role to improve the learning experience of students at school,
- be part of the student reps community all programs combined,
- participate in meetings, workshops, events

TESTIMONIAL

Eugénie
and
Charlotte
student reps
BiM1
last year

Click here to [Find out more](#) on website ALOHA

APPLY TO BECOME A STUDENT REPRESENTATIVE

Student Reps 2024-25 Campaign
BIM candidates give us your
name!



SHINE AS AN AMBASSADOR



MARIE CHEVRON

forums@rennes-sb.com

LOUISE BEZEAUX

promotion-france@rennes-sb.com



WELCOME TO YOUR NETWORK

DISCOVER OUR NETWORK



WHAT IS AN **ALUMNI** NETWORK?

- Non-profit association founded in 1993 & School Department
- 28 000+ members (students & graduates) in France and abroad



ONCE A STUDENT, ALWAYS AN ALUMNI

ALUMNI COMMUNITY

- Students from DAY 1 in Rennes School of Business
- Graduates for ever





AIMS & VALUES

1 Promote exchanges between Alumni and supportive relations between its members

2 Defend interests attached to the diplomas awarded by the School

3 Act as an accelerator of professional opportunities

WORLDWIDE NETWORK



ALL JOBS, ALL SECTORS, ALL OVER THE WORLD

WE SHOW THE WAY AND HELP ON THE JOURNEY



- Clarify and give relevant images
- Create conditions for cooperation that benefits us all
- Share best practices and create common understanding

MISSIONS & SERVICES



DATA

- Online directory
- Statistics and reports

EXPERIENCES

- +150 events
- +17,000 social community
- +300 volunteers
- Portraits & souvenirs

CAREER

- Maximise your employability
- Career Starter / Booster

KEEP IN TOUCH



- Stay up to date with our latest news
- Join our LinkedIn Page



#BienPlusQu1Reseau

YOUR CONTACTS



Margaux GESLIN

margaux.geslin@rennes-sb.com

Communication
Social media
Events



Maya GRASSI

maya.grassi@rennes-sb.com

Career Development
Job opportunities



Violaine POGEANT

violaine.pogeant@rennes-sb.com

Communication
Events
Data

BECOME A PIONEER WITH INNOSTART



VALENTIN HENRY

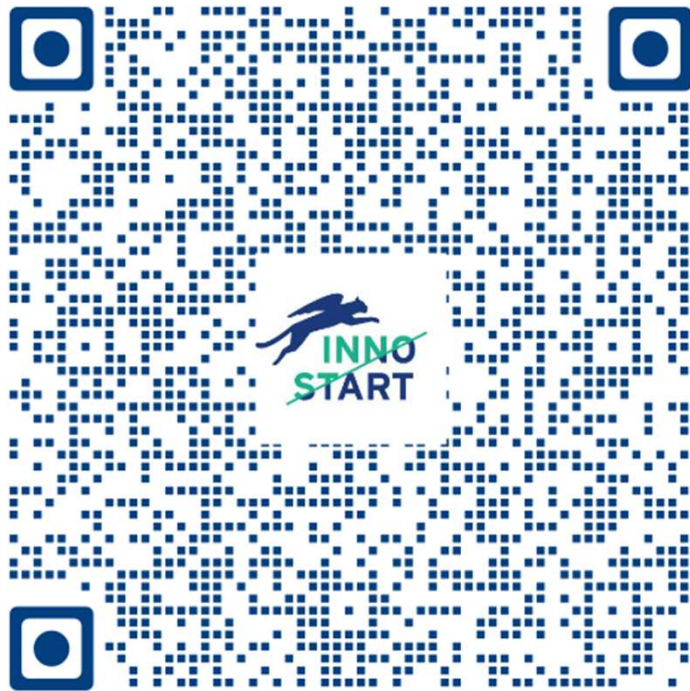
- ❑ P22 PGE , ex entrepreneur
- ❑ 3 companies created
- ❑ 300+ entrepreneurs met



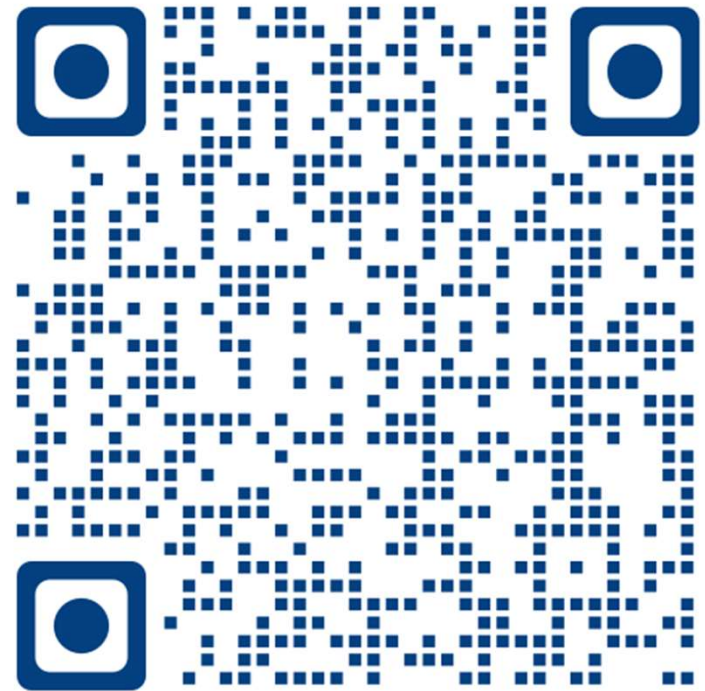
WHAT'S INNOSTART ?

- ❑ 164 entrepreneurs in 2023-2024, 20 companies created
- ❑ Coworking Space in B2 & B4
- ❑ 30 events

INNOSTART



PUM'AWARDS



LET'S START YOUR BUSINESS



**RENNES
SCHOOL
of BUSINESS**

UNFRAMED THINKING

ENGAGE FOR YOUR COMMUNITY IN RENNES

COME AND CHEER FOR YOUR SCHOOL DURING THE MARATHON VERT



LE MARATHON
VERT® RENNES SCHOOL
OF BUSINESS

RSB title partner for the 2nd year
running

*RSB partenaire titre pour la 2^e
année consécutive*

26 and 27 October 2024

RUNNING / LES COURSES

6 runs courses

Saturday evening 26 *Le samedi 26 au soir*

- 5 km family walk *Marche familiale de 5 km*
- 5 km women's run *Course féminine de 5 km*
- 10km run *Course 10km*

Sunday mornings *Le dimanche matin*

- Marathon 4 runners: 7 to 11 km each
Marathon 4 coureurs : 7 à 11 km chacun
- Marathon 2 coureurs : 21 km chacun
Marathon 2 runners: 21 km each
- Marathon solo : 42,195 Km

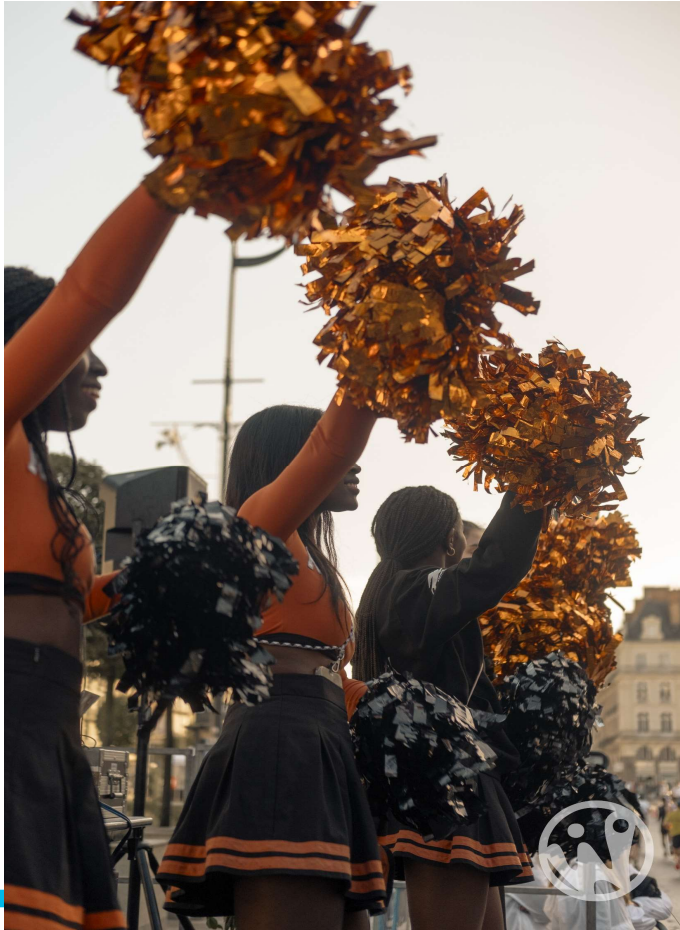


CONNECT RUN



- 1st edition exclusively in Rennes SB
*1^{ère} édition en
exclusivité à Rennes SB*
- Student/professional team
*Équipe étudiant.s /
professionnel*
- Groups based on running level and
professional sector
*Groupes basés sur le
niveau de course et le
secteur professionnel*
- The best way to network while doing
sport
*Meilleur moyen de créer son
réseau tout en faisant du sport*

WHAT WE'RE LOOKING FOR / CE QU'ON RECHERCHE



80 volunteers throughout the weekend
*80 bénévoles sur tout
le week-end*

50 runners
50 coureurs

Supporters!
Des supporters !

Contacts :
margaux.le-bail@rennes-sb.com
thomas.lebon@rennes-sb.com



LE MARATHON
VERT RENNES SCHOOL
OF BUSINESS

NEXT
PROGRAMME UPDATE MEETING

17/10/2024

ANY QUESTION ?

**Visit Aloha Website -
aloha.rennes-sb.com**

THANK YOU FOR YOUR ATTENTION



KEY DATES SEMESTER 1

SEPTEMBER

13/09 – BIM PUM#1

14/09 – FOUNDATION DAY BVE / Journée d'intégration BVE

18/09 – ALOHA FAIR

13 to 30/09 - Student Reps' election deadline

OCTOBER

03/10 and 04/10 - Career Days#1

17/10 - BIM PUM#2

14/10 - Student Reps' Workshop

28/10 to 02/11 - Holidays

NOVEMBER

13/11 - International Fair

15/11 - BIM PUM#3

DECEMBER

02/12 to 14/12 - FINAL EXAMS AT SCHOOL

16/12 to 04/01 – XMAS HOLIDAYS